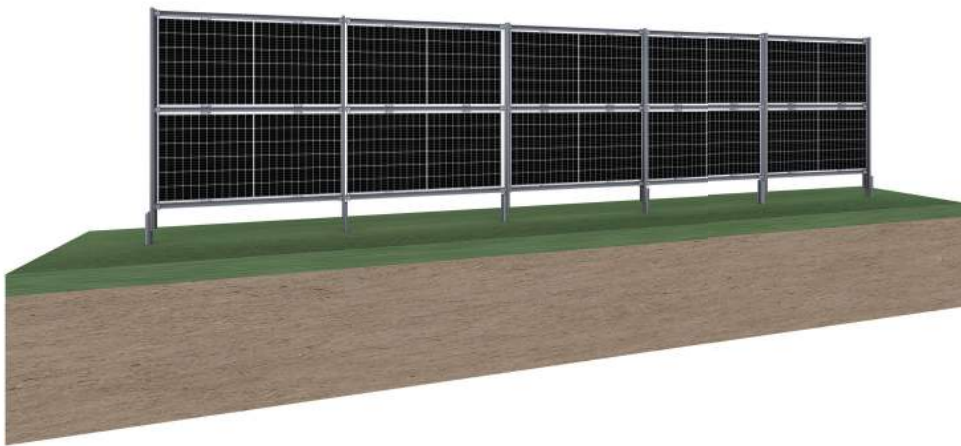


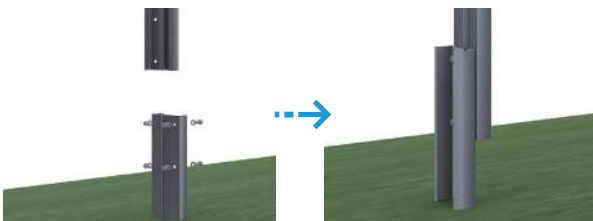
DEMETER DUAL SOLAR FENCE

Demeter DUAL converts boundary spaces into productive energy zones. Featuring vertically positioned bi-facial panels, this innovative solar fence solution captures sunlight from multiple angles, greatly enhancing power output while optimizing land use for both agricultural and residential applications. Constructed from advanced materials, the Demeter DUAL is designed to endure harsh environmental conditions, ensuring long-term durability and reliable performance. Ideal for farmers and sustainability-minded property managers, this state-of-the-art mounting system offers a smart investment that generates renewable energy without sacrificing valuable ground space.

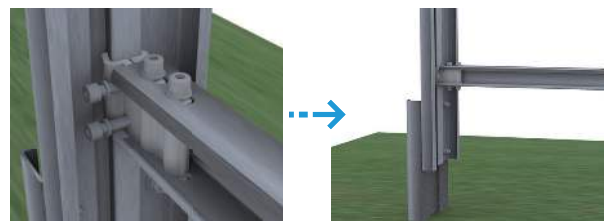


INSTALLATION STEPS

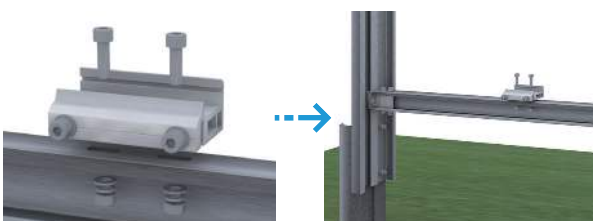
1. Install E Type Column & Convex Column



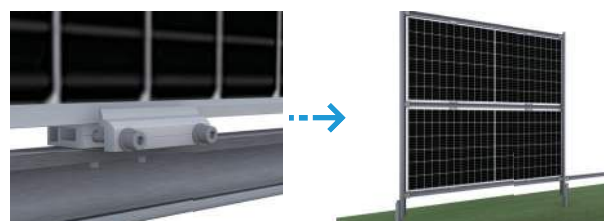
2. Install C-shaped steel beam kit



3. Install Module Clamp Blocks

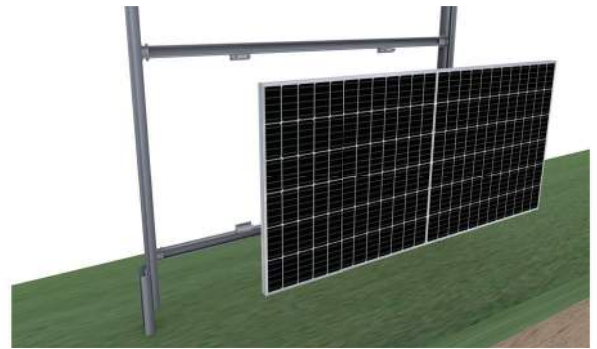


4. Install Solar Module



TECHNICAL PARAMETER

Installation Site	Open Ground
Material	Zinc Aluminum Magnesium + Aluminium
Tilt Angle	90°
Wind Load	60m/s
Modules Orientation	Landscape
Array Layout	Perpendicular to The Ground, Facing East and West
Ground Clearance	≥0.2m-Customize
Suggested Row Spacing	≥10m
Warranty	10 Years
Construction	<ul style="list-style-type: none"> • Megawa Solar Patented E-Ground Screw Foundation • Megawa Solar Patented SF Stand Columns • Megawa Solar Patented SF Columns Clamp
Module Connector	<ul style="list-style-type: none"> • Megawa Solar Patented Universal Fixed Clamp for Frameless Module • Megawa Solar Patented Universal Fixed Clamp for Framed Module
Scope of Service	<ul style="list-style-type: none"> • Project Planning for The Fencing System • Delivery of All of The Mounting Material
Height of Single Row	•1.5m-1.8m (Accept Customized Height)
Height of Double Rows	•1.9m-2.2m (Accept Customized Height)



COMPONENTS

			
Concave And Convex Clamp	E Type Column	Concave And Convex Column	Solar Module
			
Concave And Convex Clamp	Fence Clamp Block Kit	M8 Bolt Kit	M10 Bolt Kit

FEATURES

- Turn fences into solar & revenue.
- Simple to install without requiring extensive land alteration.
- The vertical installation of the modules allows for sunlight absorption from both sides.
- It can be used for livestock grazing, as commercial privacy screens, industrial area enclosures, and more.